



# Birthingways

The Newsletter of Birthingway College of Midwifery

## Inside This Issue

Midwifery Graduates	1
Calendar	2
Building Update	2
Mike Redding	2
Are YOU passionate about...	3
Program Update	4
Prerequisites	5
New Member and Staff	6
Support Opportunities	6
Join the Board of Directors	7



## 2020 – 2021 Midwifery Graduates

### 2020

Alysa Merritt  
Jillian Denny  
Jamie Lefcovich  
Bethany Loehrke  
Capri Parker  
Molly Scott

### Winter 2021

Jillian Hamilton

### Spring 2021

Dana Slaughterbeck

## Congratulations, Midwifery Graduates!

Completing the midwifery program is an enormous accomplishment and rite of passage, requiring great perseverance, sacrifice, and deep love for the work. We feel such sadness that we were not able to celebrate these new midwives in person again this year due to the pandemic. And we are so proud of our graduates for all they've accomplished and for all the amazing work we know they will do!

## Front Office

While we no longer have a front office that is open to the public, we welcome you to reach out to us with questions and paperwork via phone 503-760-3131 or email at [info@birthingway.edu](mailto:info@birthingway.edu).



# Calendar

<b>AUGUST 1 - 7</b>	World Breastfeeding Week
<b>AUGUST 17</b>	National Nonprofit Day
<b>AUGUST 23</b>	Fall Registration Begins
<b>AUGUST 26</b>	Women's Equality Day
<b>AUGUST 30</b>	Fall Term Registration Deadline
<b>SEPTEMBER 12</b>	Summer Term Ends
<b>SEPTEMBER 13</b>	Fall Term Begins
<b>SEPTEMBER 20</b>	Enrollment Confirmation
<b>SEPTEMBER 30</b>	FAFSA 2021-22 Deadline for Prerequisite Courses
<b>OCTOBER 10</b>	<i>Exploring Midwifery</i> First Session
<b>NOVEMBER 25-26</b>	Thanksgiving Break
<b>DECEMBER 6</b>	Fall Term Ends

## Have you heard the news? We sold the Foster House and moved online!

Early this year, we sold the Foster Road house and transitioned to a decentralized structure.

During the pandemic, staff, and faculty have been working from home to administer programs and facilitate distance-based learning. We've re-imagined our Midwifery Program as a comprehensive virtual program and will start our first full cohort in Fall 2022.

While we no longer have a front office that is open to the public, we welcome you to email [outreach@birthingway.edu](mailto:outreach@birthingway.edu) with any questions about the new program, prerequisites, and enrollment. For other questions contact [info@birthingway.edu](mailto:info@birthingway.edu) or 503-760-3131.

## Thank You, Mike Redding

After 10 years on the Board of Directors, Mike retired from service. We thank Mike for all his time and contributions. We appreciate his long term dedication and service to our students, staff, and community.



# ARE YOU PASSIONATE ABOUT...

Outstanding biodynamic care for pregnant and birthing people, infants, and new parents?

Providing a good start for parents of all kinds?

Healthcare equity and choice as well as erasing disparities in maternal and infant health outcomes?

The Midwifery Model of Care?

Collaborative learning communities and competency-based education?

Support for postpartum parents?

Assistance for all kinds of families?



**Birthingway**  
College of Midwifery  
*Online*

## THEN BIRTHINGWAY IS THE PLACE FOR YOU!

### **We are VIRTUAL!**

Birthingway Midwifery College Online comes to you so that you don't have to re-locate. We have expanded our program by moving online and keeping costs low so you can access midwifery training.

### **Our Model is BIODYNAMIC!**

All of our programs hold the Biodynamic Model as the foundation in training you to become skilled in providing thorough, safe, responsive, and sensitive care. The Biodynamic Model is based on relationships of trust and grounded in the physiology and energy of pregnancy, birth, and the postpartum.

### **Our Vision is DIVERSE and GLOBAL!**

Midwives have the opportunity to address health inequities and all but erase birth outcome disparities.

We can now support you and other students worldwide and continue the mission of high-quality, competency-based education within the Biodynamic Model while providing a personal experience.

## THERE'S NO PLACE IN THE WORLD LIKE BIRTHINGWAY!

Would you like to receive regular updates (twice a month) with details on the online program?

Email **ADD ME** to  
[outreach@birthingway.edu](mailto:outreach@birthingway.edu)



# TIMELINE • FAFSA

Would you like to receive regular updates (twice a month) with details on the online program?  
Email **ADD ME** to [outreach@birthingway.edu](mailto:outreach@birthingway.edu) to be added to the email list.

## UPDATE FROM AMY #1 AUGUST 2021

### VIRTUAL PROGRAM

We are rebooting our Midwifery Program as a comprehensive virtual program and will be admitting our first full cohort to begin in Fall 2022. I will be emailing you every other week with details on prerequisites, workshop sign-ups, application details, and more as the information becomes available.

If you have questions, please contact me directly at [outreach@birthingway.edu](mailto:outreach@birthingway.edu).

### FAFSA INFO

If you're wondering if you should fill out your 2021-22 FAFSA, the answer is YES!

If you haven't already done so, please fill out and submit your 2021-22 FAFSA by Sept 30, 2021, so that we are aware of any scholarship needs for our new prerequisite courses.

<https://studentaid.gov/h/apply-for-aid/fafsa>

### TIMELINE FOR MATRICULATING CLASS OF 2022

FAFSA completed by Sept 30, 2021

Application Available: Nov 1, 2021

Early Application Deadline: May 1, 2022

Regular Application Deadline: Jun 21, 2022

Fall Term Registration Begins: Aug 23, 2022

First day of Fall Term - Sept 12, 2022

#### New Prerequisite Courses:

- Exploring Midwifery
- So You Want to be a Midwife
- Biodynamic Care

Please visit [birthingway.edu](http://birthingway.edu) for more details.



If you have questions, please contact Amy directly at [outreach@birthingway.edu](mailto:outreach@birthingway.edu).

# PREREQUISITES

UPDATE #2  
AUGUST 2021

## ADMISSION PREREQUISITE INFO

Prerequisites do not have to be complete at the time of application. However, acceptance into the program is final pending successful completion of prerequisites, with documentation submitted to Birthingway. Birthingway is not able to offer financial aid for standard prerequisites.

## STANDARD PREREQUISITES

*You will need to complete these three college-level courses before enrolling in Birthingway.*

### Human Anatomy and Physiology Course

At least 4 quarter credits or 3-semester credits covering all of the body systems.

### Medical Terminology

At least 1 quarter credit.

### Writing Course

A 4 quarter credit or 3-semester credit college-level expository writing course.

*And you will also need:*

### Labor Doula Workshop

You must take an approved Labor Doula workshop. Approved programs include DONA, ICEA, Birthworks, Birth Arts Doula Program, and others. You do not need to be a certified doula to apply.

*You must also provide the following:*

### Pre-College Requirement

You must provide proof of a high school diploma or GED.

### Technical Standards for Midwifery Integration

You must meet our technical standards when you apply and throughout your education at Birthingway.

*Please visit [birthingway.edu](http://birthingway.edu) for more details*

## NEW PREREQUISITE COURSES

*Along with the standard prerequisites, you need to take these Birthingway courses:*

### Exploring Midwifery

Direct-entry midwives and students share their stories on becoming a midwife and living midwifery day-to-day. Explore the highs and lows of this deeply satisfying and challenging vocation. And learn more about Birthingway's online program. Meets every other Sunday afternoon for five, 2-hour sessions. You must attend at least three sessions (six hours) to meet the Birthingway prerequisite.

Noon - 2 pm PST on Oct 10, Oct 24, Nov 7, Nov 21, and Dec 5. Cost: \$40.

**OR**

### So You Want to be a Midwife

A condensed version of Exploring Midwifery offered in a single, 6-hour session (plus a 30-minute break). You must attend the entire session (six hours) to meet Birthingway's prerequisite.

Winter & Spring term: Date TBA, Cost: \$40.

### Biodynamic Care

How do midwives practice biodynamically? In this course, you will learn how to care for birthing people and their families by increasing oxytocin (the trust hormone) and decreasing stressors, resulting in healthy pregnancies and births, as well as immediate and long-term parent-child connections.

Please fill out the 2021-22 FAFSA if you have scholarship needs for this course.

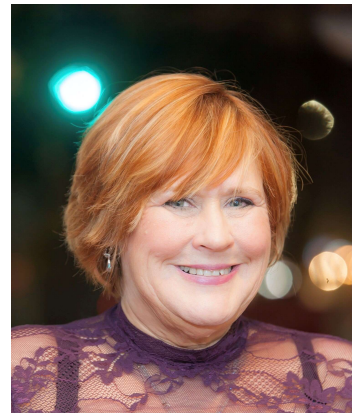
This 1 quarter credit course costs \$350 (plus \$100 term registration fee)

If you have questions, please contact Amy directly at [outreach@birthingway.edu](mailto:outreach@birthingway.edu).



## Welcome to our new Board member!

Kim Handsaker is a Vice President / Area Manager with Umpqua Bank. Kim oversees the local Portland, Oregon Umpqua Stores and works with a team of 16 amazing managers. Kim is a mom of two grown sons and two spoiled Bassett Hounds.



## Welcome our new Outreach Coordinator!

Amy has been working with nonprofits for over 20 years. Her goal is to tell the story of Birthingway, Biodynamic Care, and the midwifery community as a whole. She is excited to learn and grow with this wonderful organization and community.

Please contact Amy at [outreach@birthingway.edu](mailto:outreach@birthingway.edu) with any thoughts or ideas.

## Thank you for your Support

We can't fulfill our vision without the support from this impassioned community. We would like to send a thank you to our students, staff, educators, volunteers, board members, and all of those who go above and beyond every day to support and build up Birthingway and the birthing community.

## Want to help Birthingway grow?

Switch over to **AmazonSmile** and select Birthingway as your designated nonprofit organization!

**Hive CE** partners with Birthingway with three continuing education courses that directly support Birthingway.

Shopping at **Fred Meyers** can support Birthingway! Add Birthingway as your Community Rewards partner on your account online today!



# Board Membership

## WE WANT WHAT YOU HAVE TO OFFER – YOUR VISION, DRIVE, AND SPIRIT!

We're looking for committed board members from across the US to join our Board of Directors and take action to support, engage, and uplift midwifery education and the Birthingway community. Your time and talents will be key to the exciting things coming this year, including an Endowment Campaign, 3.0 online program roll-out, diversity participation and engagement, and so much more!

If you are interested in becoming a member of Birthingway's Board of Directors, please let us know TODAY.

### OUR PASSION

- Outstanding biodynamic care for pregnant and birthing people, infants, and new parents
- Healthcare equity and choice
- Erasing disparities in maternal and infant health outcomes
- Relationship-centered care
- The Midwifery Model of Care
- Collaborative learning communities
- Competency-Based Education
- Support for postpartum parents
- Building diverse networks of care providers
- Assistance for all kinds of families

### OUR MISSION

To set the standard for educating excellent entry-level and continuing practitioners of the midwifery arts and sciences within the biodynamic model, integrating a solid framework of traditional knowledge and practices with a variety of therapeutic approaches.

### OUR MODEL

All of our programs hold the Biodynamic Model as the foundation in training students to become skilled in providing thorough, safe, responsive, and sensitive care. In the Biodynamic Model, pregnancy, birth, and nursing are necessary parts of human life, intimately connected with what it is to be human.

### OUR VISION

**VIRTUAL:** We have expanded our program by moving online and keeping costs low so even more students can access midwifery training.

**DIVERSE:** Midwives have the opportunity to address health inequities and all but erase birth outcome disparities. We are actively engaged in educating students and families in lower-resourced communities to embrace the benefits of midwifery.

**GLOBAL:** There's no place in the world like Birthingway. We can now support students worldwide and continue the mission of high-quality, competency-based education within the Biodynamic Model while providing a personal experience.

## THIS IS THE ENDURING SPIRIT OF BIRTHINGWAY!

Contact our Outreach Coordinator, Amy, directly at [outreach@birthingway.edu](mailto:outreach@birthingway.edu) with any questions!